

# MR11 / GU4

## 1.5W - 120°

### SPECIFICATIONS & TECHNICAL DATA

The 12V EmeryAllen MR11 retrofit lamp is an energy efficient alternative to halogen MR11 lamps. It offers similar light output to a 12V, 10W incandescent (135lm) and is suitable for use in most 12V GU4 MR11 fixtures.

<b>Base Type</b>	GU4
<b>Material</b>	Ceramic + PC
<b>Input Voltage</b>	12V AC
<b>Wattage</b>	1.5
<b>Volt-Amperes (VA)</b>	1.5W-2.1W
<b>CRI</b>	90+
<b>Brightness</b>	135 lumens
<b>Lumens/Watt</b>	90
<b>CBCP</b>	65.5
<b>Color Temperature</b>	2700K, 3000K
<b>R9</b>	52
<b>R13</b>	96
<b>Halogen Equivalent</b>	10W
<b>Beam Angle</b>	120 degrees

#### Available Models:

- EA-MR11-1.5W-120D-2790 (2700K)
- EA-MR11-1.5W-120D-3090 (3000K)

#### Dimming:

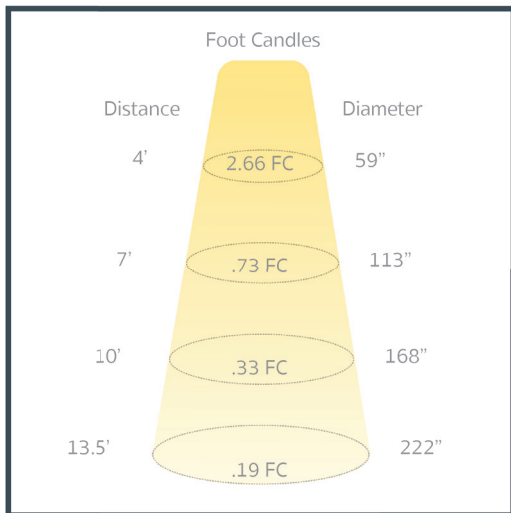
- Dimmable with most magnetic and electronic LED compatible transformers
- Dimmable with most MLV and ELV dimmers

US PAT PENDING

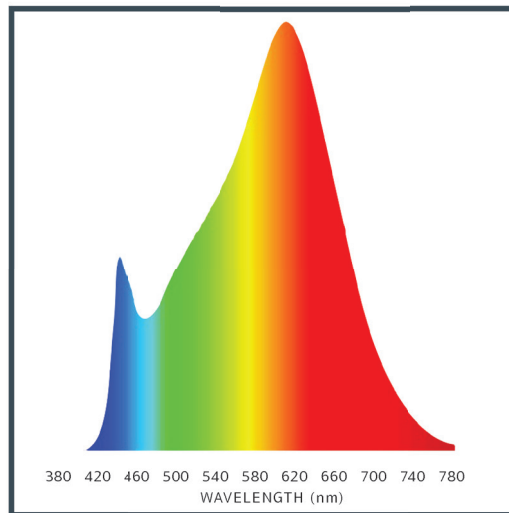


# MR11 / GU4 / 1.5W / 120°

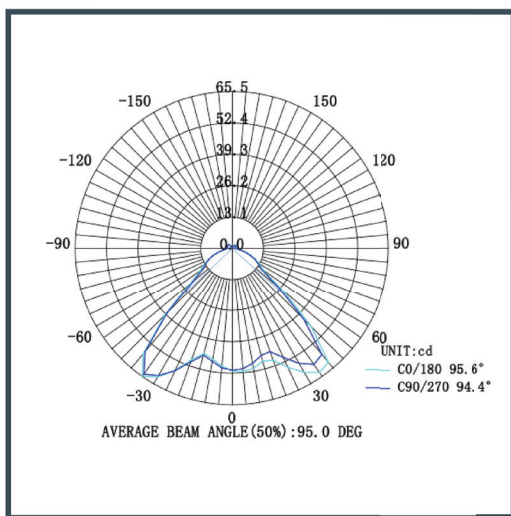
## CANDELA DISTRIBUTION



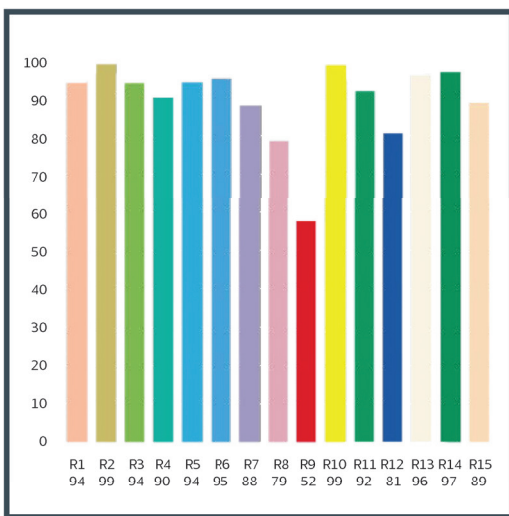
## SPECTRAL DISTRIBUTION



## LUMINOUS INTENSITY



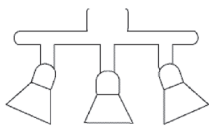
## CRI VALUES R1-R15



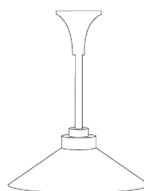
## APPLICATIONS

Because of their small size, ability to be enclosed and numerous combinations of options, our MR11 can be used in a variety of applications. Here are a few common ones.

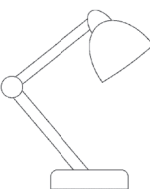
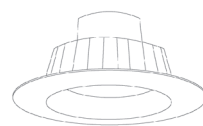
TRACK LIGHTING



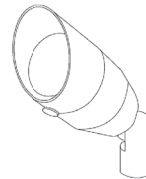
PENDANTS



RECESSED LIGHTING



TASK LIGHTING



LANDSCAPE LIGHTING