

MR11 / GU4

1.5W - 36°

SPECIFICATIONS & TECHNICAL DATA

The 12V EmeryAllen MR11 retrofit lamp is an energy efficient alternative to halogen MR11 lamps. It offers similar light output to a 12V, 10W incandescent (135lm) and is suitable for use in most 12V GU4 MR11 fixtures.

Base Type	GU4
Material	Ceramic + PC
Input Voltage	12V AC
Wattage	1.5
Volt-Amperes (VA)	1.5W-2.1W
CRI	90+
Brightness	135 lumens
Lumens/Watt	90
CBCP	195
Color Temperature	2700K, 3000K
R9	52
R13	96
Halogen Equivalent	10W
Beam Angle	36 degrees

Available Models:

- EA-MR11-1.5W-36D-2790 (2700K)
- EA-MR11-1.5W-36D-3090 (3000K)

Dimming:

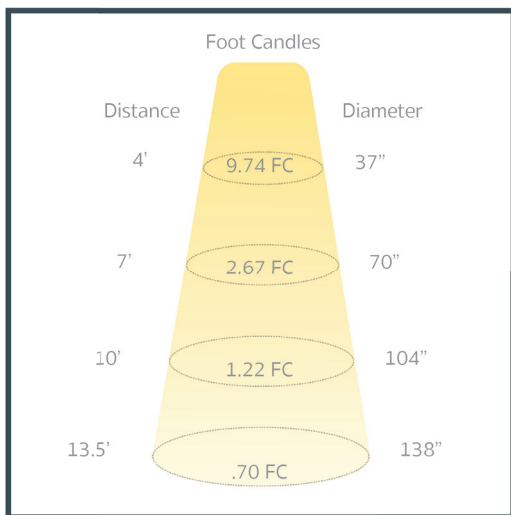
- Dimmable with most magnetic and electronic LED compatible transformers
- Dimmable with most MLV and ELV dimmers

US PAT PENDING

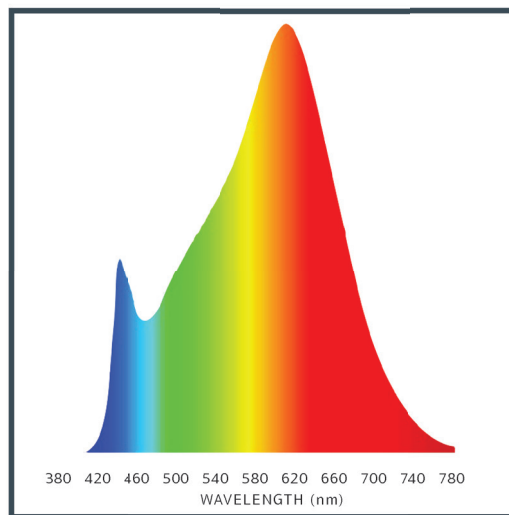


MR11 / GU4 / 1.5W / 36°

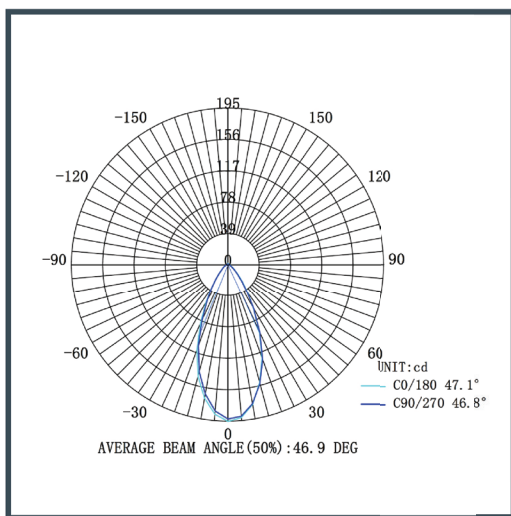
CANDELA DISTRIBUTION



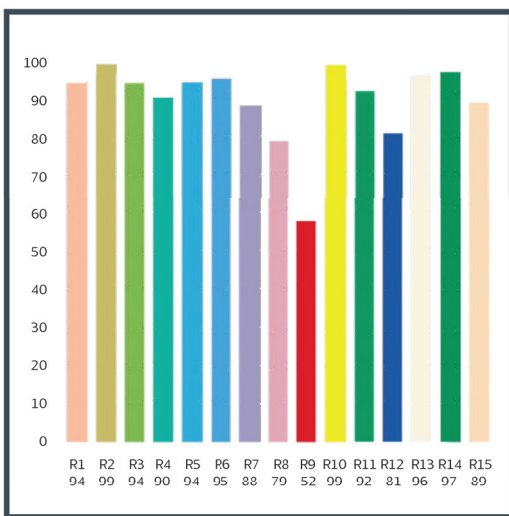
SPECTRAL DISTRIBUTION



LUMINOUS INTENSITY



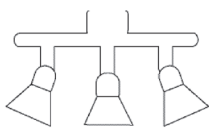
CRI VALUES R1-R15



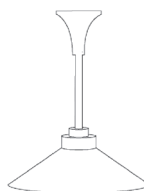
APPLICATIONS

Because of their small size, ability to be enclosed and numerous combinations of options, our MR11 can be used in a variety of applications. Here are a few common ones.

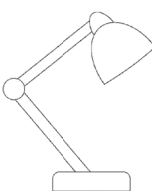
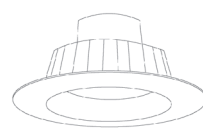
TRACK LIGHTING



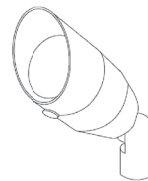
PENDANTS



RECESSED LIGHTING



TASK LIGHTING



LANDSCAPE LIGHTING